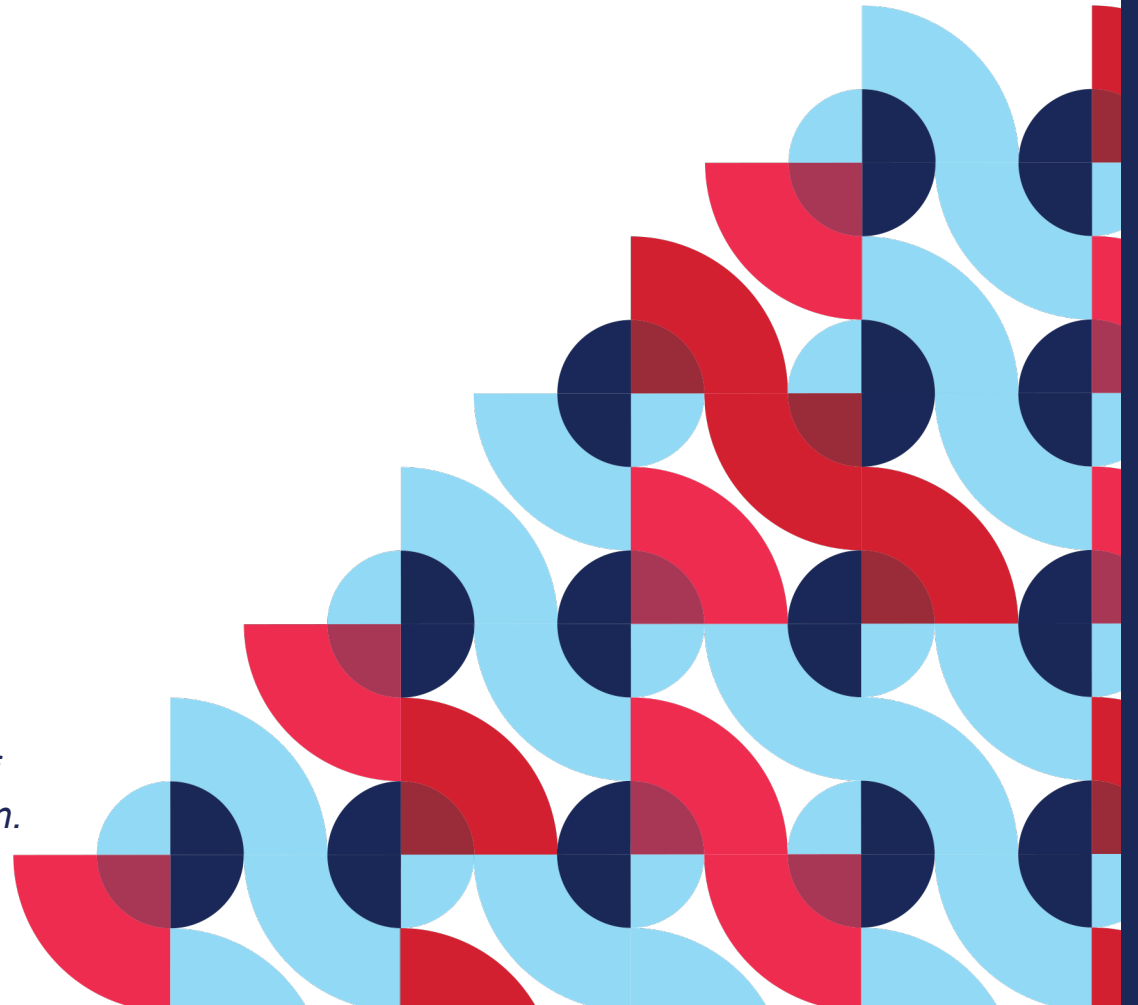




United States
Consumer Product Safety Commission

eFiling Overview

Disclaimer: This presentation was prepared by CPSC Staff and may not necessarily reflect the views of the Commission.







What is eFiling?



eFiling is a CPSC initiative under which importers of regulated consumer products will electronically file (eFile) data elements from a certificate of compliance with U.S. Customs and Border Protection (CBP), via a Partner Government Agency (PGA) Message Set.

eFiling – CPSC’s Modern Approach for Filing Certificate Data

-  Data stored electronically in the secure CPSC Product Registry
-  Multiple options for electronically filing a PGA Message Set before a shipment arrives
-  Streamlined and more efficient processes for trade
-  Easier compliance with CPSC’s certification requirements

eFiling Benefits



Benefits to Trade

- Reduction in risk score
- Reduced hold times for compliant products
- Fewer examinations
- Reduced costs to the importer
- Enhanced certificate data management process





Benefits to CPSC

- Improved focus and targeting of higher risk products
- Reduced inspection delays
- Enhanced agency resource allocation
- Maximized examination efficiency
- Keeps noncompliant products out of consumer's hands

eFiling Processes and Data Capture



See a breakdown of eFiling data elements and processes below:

<i>Message Set</i>	<i>Data Entry Processes</i>	<i>Recommended for...</i>
 Full PGA Message Set	<ul style="list-style-type: none">Participants transmit all required certificate data elements into the Message Set for transmission into CBP's Automated Commercial Environment (ACE) systemAll seven product certificate data elements are provided in the Message Set	<ul style="list-style-type: none">Participants who import a limited number of regulated consumer productsParticipants who do not repeatedly import the same product
 Reference PGA Message Set	<ul style="list-style-type: none">Participants enter certificate data elements into CPSC's secure Product Registry, then input certificate identifiers into CBP's ACE systemThe Product Registry includes:<ul style="list-style-type: none">Manual upload within the user interfaceBulk upload via Comma Separated Value (CSV) file or Automated Programming Interface (API)	<ul style="list-style-type: none">Participants who repeatedly import regulated consumer products covered by the same product certificates

Product Certification

Importers are responsible for certifying products and providing product certificate data elements. CPSC does not oversee how importers collaborate with trade partners to comply with eFiling.

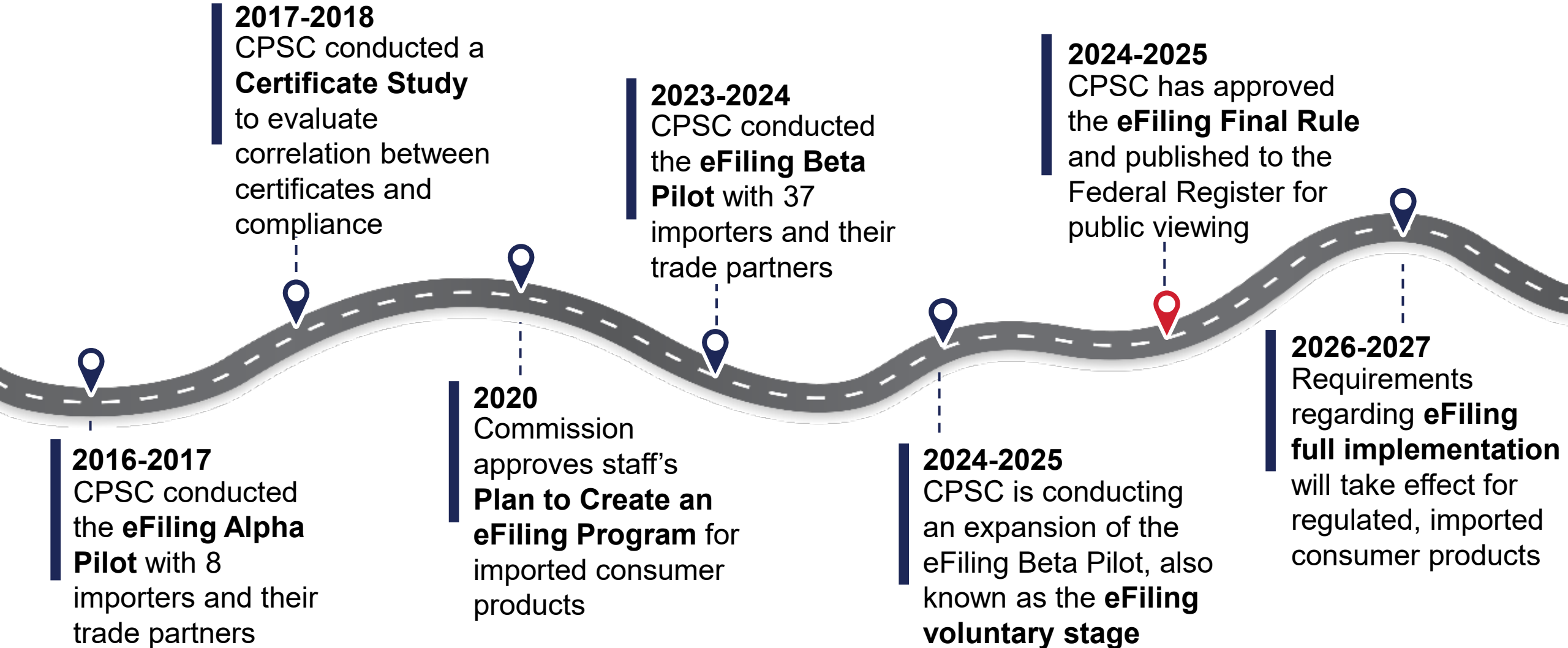
Products must be certified if they are...

- Subject to a consumer product safety rule, ban, similar rule, standard, or regulation;
- Imported for consumption or warehousing; or
- Distributed in commerce.



All trade parties must know which mandatory standards apply to the products they are importing.

eFiling Program Roadmap



eFiling Full Implementation

CPSC has approved a Final Rule to implement eFiling of Certificate information for regulated, imported consumer products.

Most Imported Consumer Products

Requirements will take effect on **July 8, 2026**, or 18 months from Final Rule publication in the *Federal Register*.

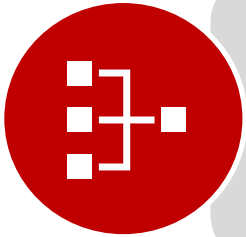
Consumer Products imported into a Foreign Trade Zone (FTZ)

Requirements will take effect on **January 8, 2027**, or 24 months from Final Rule publication in the *Federal Register*.

For more information, view the [CPSC News Release](#) and [Federal Register Notice](#).

eFiling Voluntary Stage Participation

The eFiling voluntary stage allows importers and their trade partners to gain early access to eFiling systems before full implementation. Participation is essential for many reasons, including:



Systems Integration and Readiness

Participants may prepare systems and input required data elements ahead of eFiling full implementation.



Feedback Gathering Sessions

CPSC will gather and consider participant feedback while incorporating improvements into eFiling systems.



Learning and Development Opportunities

Participants can utilize educational resources and office hours to learn how to properly eFile before requirements take effect.

eFiling Support Services



CPSC has multiple channels to provide the most current, relevant, and accurate support to enable effective eFiling implementation.

Resources



Visit the eFiling webpage at www.CPSC.gov/eFiling



Sign up for the eFiling [Mailing List](#)



Explore the [eFiling Document Library](#)



View the [CPSC Product Registry Training Videos](#)

Support



Contact the support team at eFilingSupport@CPSC.gov



Email with questions, feedback, and comments



Ask technical questions for the IT team